

 Tag us on Instagram!  
[@sternmastermarinetools](https://www.instagram.com/sternmastermarinetools)

 Follow us on Facebook!  
[Facebook.com/SternmasterMarineTools](https://www.facebook.com/SternmasterMarineTools)



---

## WALL OUTBOARD STORAGE BRACKETS



[CustomerService@Sternmaster.net](mailto:CustomerService@Sternmaster.net)

1-800-305-8117

[www.SternmasterMarine.com](http://www.SternmasterMarine.com)

[Facebook.com/SternmasterMarineTools](https://www.facebook.com/SternmasterMarineTools)

# ME-165 PRODUCT MANUAL

---

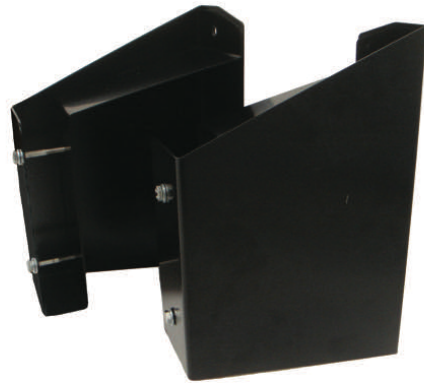
[CustomerService@Sternmaster.net](mailto:CustomerService@Sternmaster.net)

411 N Centennial St  
Zeeland, MI 49464

[SternmasterMarine.com](http://SternmasterMarine.com)  
1-800-305-8117

## ASSEMBLY INSTRUCTIONS

### ME-165 WALL OUTBOARD STORAGE BRACKETS



Provide your own 2" x 8" lumber  
Provide your own wall fasteners



3/8" x 2.5" Bolts, Washers, Nuts

-Attach your 2x8 in the brackets with the provided hardware

#### Mounting Guidelines

The ME-165 Wall Storage Brackets are designed for use with a piece of 2" x 8" lumber (not included) of up to 52". The length of the lumber should be determined by the available mounting locations for the end brackets.

Each bracket should be fastened to a solid surface, ideally a stud or concrete wall. When mounting to a stud wall ensure that the fasteners are centered on the stud and penetrate at least 2". The fasteners that should be used for mounting include lag bolts or concrete anchors; because of the various possible attachment materials, no wall fasteners are included. After the brackets are mounted, the 2" x 8" can be cut to length and mounted using the 3/8" assembly hardware included. This will involve drilling the lumber when in place.

#	(Qty) Part Name	#	(Qty) Part Name
1	(1) Left Bracket	3	(4) 3/8" x 2.5" Bolt
2	(1) Right Bracket	4	(8) 3/8" Washer
		5	(4) 3/8" Nut